



PC-based *audiometer*

- A Professional Office Experience
- Seamless Data Integration
- Improved Time Management
- Modern Technology & Innovative Design



leading diagnostic solutions



Equinox - PC-based Audiometer

- Modern design and unmatched flexibility



An included mounting bracket allows the Equinox to be mounted in a variety of locations – including inside an examination room or a sound booth.

Efficient audiometry

Imagine a faster and more efficient way of performing audiometry. The functionality of the Equinox will make it a welcome and integral part of your daily routine, and the elegant design makes it a welcome addition to your office.

Keep your desk clear and free of paperwork by using the AC440 database - compatible with NOAH or IABaseII. Store your patient journals and audiograms for quick retrieval and professional reports. You can even integrate records with the export function via “XML files” to your office electronic medical records system.



For the feel and control of a traditional audiometer, a dedicated keyboard is available. This optional unit incorporates easily programmable buttons allowing for greater flexibility.

PC-based audiometry

With the help of advanced PC technology, you can place the Equinox inside a soundbooth and run the tests from outside the booth.

The USB cable connects from the hardware to your PC. This eliminates the need for most patch cords, reducing clutter and increasing reliability. The dedicated wall-mount design allows for flexible placement of your new audiometer.

The design of the Equinox allows you to replace outdated, bulky machinery with an attractive solution helping you to lift the impression of your clinic to a new level.



Full-featured clinical audiometer with AC440

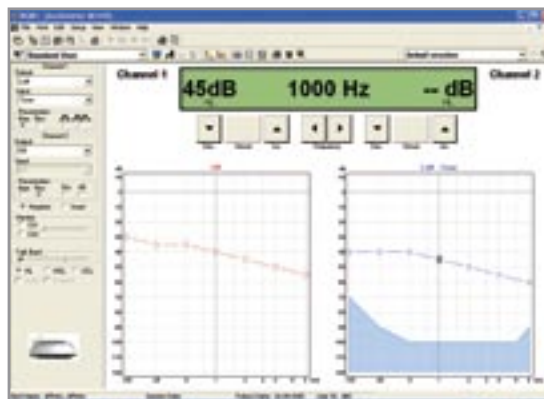
Used with the AC440 audiometry software, you get a full two-channel clinical audiometer.

The AC440 software includes all the traditional clinical testing capabilities such as air-bone-speech, but when combined with the technology of a PC you get the unprecedented flexibility to use the standard test protocols or customize your own – choose which tests you run and in what order, set your levels, make short-cut keys and save your settings as your own personal profile. In fact, each user can have a unique procedure.

Full integration

The Equinox AC440 is a PC-based unit with a central database. All client data can be saved directly to NOAH or Interacoustics' own IABaseII database during the audiometric evaluation.

The audiometric software can be operated by the PC keyboard, mouse or by the dedicated audiometer keyboard. This optional keyboard provides the feel and control of a traditional audiometer while still providing the advantages of a PC-based system.



The AC440 audiometry screen.

- A Professional Office Experience
- Seamless Data Integration
- Improved Time Management
- Modern Technology & Innovative Design



General Technical Specifications

Standards:

Safety: EN 60601-1, Class I, Type B, UL 2601-1, CAN/CSA-C22.2 No. 601.1-M90, EN 60601-1-1. **EMC:** EN 60601-1-2.

Medical CE-mark:

The CE-mark indicates that Interacoustics A/S meets the requirements of the Annex II of the Medical Device Directive 93/42/EEC.

Approval of the quality system is made by TÜV – identification no. 0123.

Computer Communication:

Built-in USB1.1 computer interface.
Optical isolation available.

PC Minimum Requirements:

Processor/clock speed: Pentium 4, 1GHz
System RAM: 256MB
Windows® 2000 or XP

Construction:

Metal cabinet.

Weight:

5.1 kg / 11.3 lbs.
Dimensions: LxWxH: 37x43,5x7,7 cm/
14.5x17x3 inches.



Technical Specifications - AC440 Audiometry Software

Audiometer Standards:

Tone: EN60645-1/ANSI S3.6 Type 1
Speech: EN60645-2/ANSI S3.6 Type A or A-E.

Calibration:

AC: ISO389-1, ISO389-2.
BC: ISO389-3.

Maximum Hearing Levels:

Hz	AC dBHL TDH39	AC dBHL EAR- Tone5A	BC dBHL B71	NB dBHL TDH39	Ext.FF dB SPL
125	90	95		75	80
250	110	100	45	95	95
500	120	110	65	110	100
750	120	120	70	110	105
1000	120	120	70	110	105
1500	120	120	70	110	105
2000	120	120	75	110	105
3000	120	120	80	110	110
4000	120	120	80	110	110
6000	120	105	50	110	105
8000	110	100	50	100	85

Extended Range Function:

If not activated, the AC output will be limited to 20 dB below maximum output.

Input:

Tone, Warble Tone, CD1, CD2, Mic1, Mic2, NBN, Wave Files.

Masking Stimulus:

Narrow Band Noise, White Noise or Speech Noise.

Outputs:

AC left, AC right, BC left, BC right, insert phones left, insert phones right, insert masking, FF1, FF2.

Transducers:

TDH39 Audiometric headset.
EAR-Tone 5A Insert phones (optional).
EAR-Tone 3A Insert phones (optional).
HDA200 Audiometric headset (optional).
B71 Bone conductor.

Tone Presentation:

Manual or Reverse. Single or multiple pulses.

Patient signal:

One or two (optional) hand held push button.

Patient communication:

Talk Forward and Talk Back.

Free Field:

Built-in 2x10W amplifier.

Monitor:

Channel 1 and Channel 2.

Storing capability:

Tone audiogram: dB HL, MCL, UCL, binaural, aided.
Speech Audiogram: SRT, SDS1, SDS2, SDS3, MCL, UCL, aided, unaided, binaural.

Compatible Software:

NOAH 3, IaBaseII.

Included Parts:

AC440 CD
TDH39 Audiometric Headset
B71 Bone Conductor
APS2 Patient Response Button
EMS400 Talkback Microphone
MTH400M Monitor Headset/Boom Mic.
Assistant Monitor Headset
UCO15 Optical USB Extension Cable
Standard Wall Mount Bracket
Sound Room Patch Cords
USB Cable
Power Cable 120 or 230V
Operation and Multilingual CE Manual

Optional Parts:

Audiometer Keyboard with live voice mic.
EarTone5A or 3A Insert Phones
CIR22 Insert Masking Earphones
HDA 200 High Frequency Headset
Free Field Speaker Kit
MTH400 Monitor Headset (patient assist)



Interacoustics USA

Phone: 1-800 947 6334
Fax: 1-952-903-4100
E-mail: info@interacoustics-us.com
Web: www.interacoustics.com
Mail: 7625 Golden Triangle Drive
Eden Prairie, MN 55344

