

Introducing the Welch Allyn

CompacVideo™ Otoscope

- Ideal for audiologists and hearing aid dispensers
- Portable, lightweight unit fits in the palm of your hand
- Promotes patient compliance and education
- Totally self-contained system requires no separate power source, light source, or video processor

A complete video otoscope in the palm of your hand!



Now there's good news for audiologists and hearing aid dispensers who want to enjoy the benefits of video otoscopy in their office but can't justify the cost of today's high-priced systems. The new CompacVideo Otoscope from Welch Allyn offers all the advantages of today's most sophisticated video otoscopes, and more, at a fraction of the price.

For less than \$1,000, our CompacVideo Otoscope gives you quick, picture-perfect images of your patients' ear canal and tympanic membrane. And the system's single cord attachment can be connected directly to your existing video monitor — eliminating the need for separate monitors, multiple cords, light boxes, and video processors.



WelchAllyn®
CompacVideo™
Otoscope

THE PRACTICAL

Easy to use. Easier to set up.

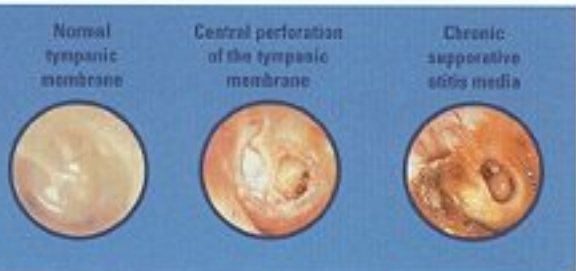
The Welch Allyn CompacVideo Otoscope is one of the most user-friendly image acquisition systems available today. The unit is prefocused and fully automatic, so anyone on your staff can use it. And the system features a unique single cord setup. Just plug it in and begin.

Improve patient compliance and education.

Our new system is not only affordable, it's the perfect patient education and compliance tool. The CompacVideo Otoscope is ideal for viewing the outer ear canal, the tympanic membrane, as well as the small details of a hearing aid. This not only helps patients understand the process, it makes them more likely to comply with your prescribed treatment.

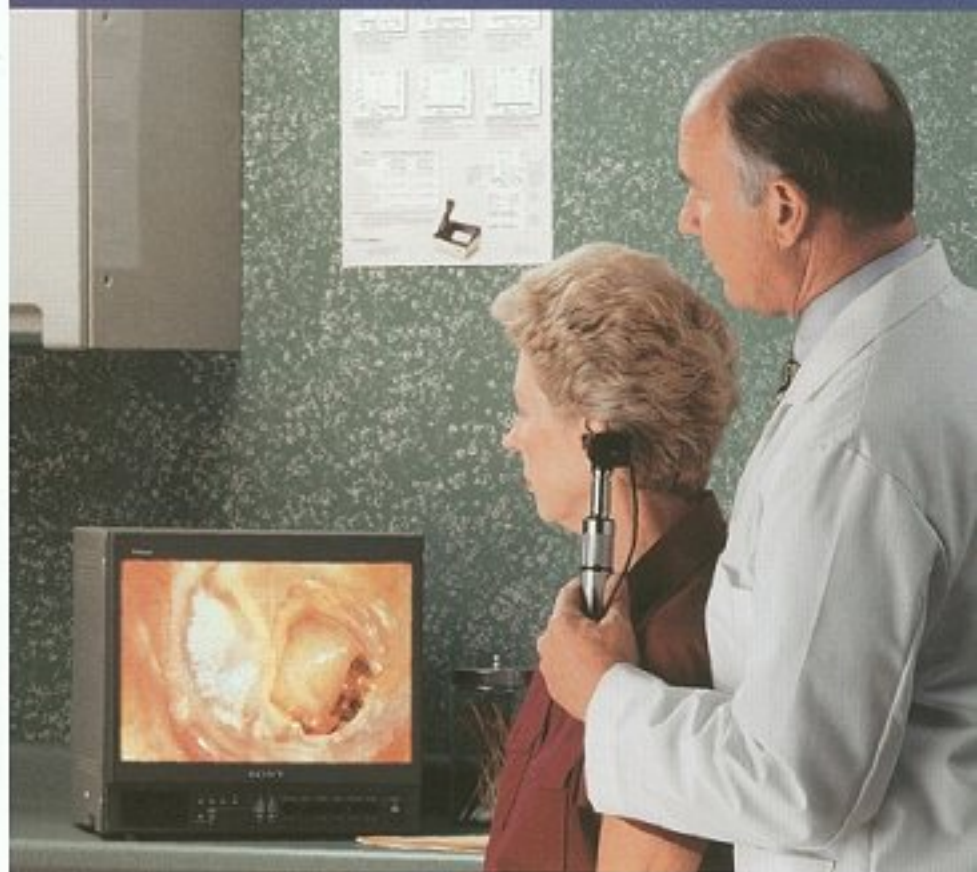
The stand-alone system that's compatible with your existing equipment.

Our new CompacVideo Otoscope is a fiber optic system with its own internal light source and video camera. And it's compatible with monitors, TVs, VCRs, printers, and frame grabbers, so you can generate hard copies at the touch of a button. Best of all, it's powered by any Welch Allyn 3.5v batteryhandle, including the new 719 Lithium-Ion Power Handle, which provides approximately two hours of continuous use.



WelchAllyn®
CompacVideo™
Otoscope

choice for busy audiologists and hearing aid dispensers.



Ordering Information

- 23101** **CompacVideo Otoscope System with Power Handle**
Includes: Video Otoscope Head, 10 Disposable (4mm) Specula, Video Cable and 71000-A Power Handle
- 23101SM** **CompacVideo Otoscope System with Power Handle**
Includes: Video Otoscope Head, 10 Disposable (4mm) Specula, Video Cable and 71900 Lithium-Ion Power Handle
- 23100** **CompacVideo Otoscope System**
Includes: Video Otoscope Head, 10 Disposable (4mm) Specula, Video Cable
- 03500** **Replacement Lamp Assembly**
- 45518** **Video Cable, RCA/RCA**

Your Welch Allyn Audiology distributor is:

4341 State Street Road, Skaneateles Falls, NY 13153-0220 U.S.A.
(888) 359-2394, ext. 1 (315) 685-4560
fax: (315) 685-3361
e-mail: VideoOto@mail.welchallyn.com

SM2064 Rev. A